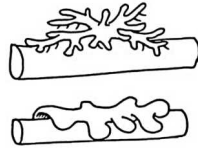


## LICHEN SURVEY

The main types of Lichen and the shape they are are shown below.



branches



flat leaves



crusty flakes

(also powdery)

Look for lichens of different colours.

Using the loupe (hand lens), check what shape it is close up. Then measure the size across with the ruler.

Write down your results in the table and also what the lichen was growing on (gravestone, building, tree etc.

If it was on a gravestone what year(s) are written on it.

Colour	Close-up looks it like	Size across in cm	What is the lichen on? If a gravestone, the year(s) written on it
White			
Orange			
Green			
Bright greenish – yellow			
Black			